

# Firmware Flash Utility Instructions

## COM1000

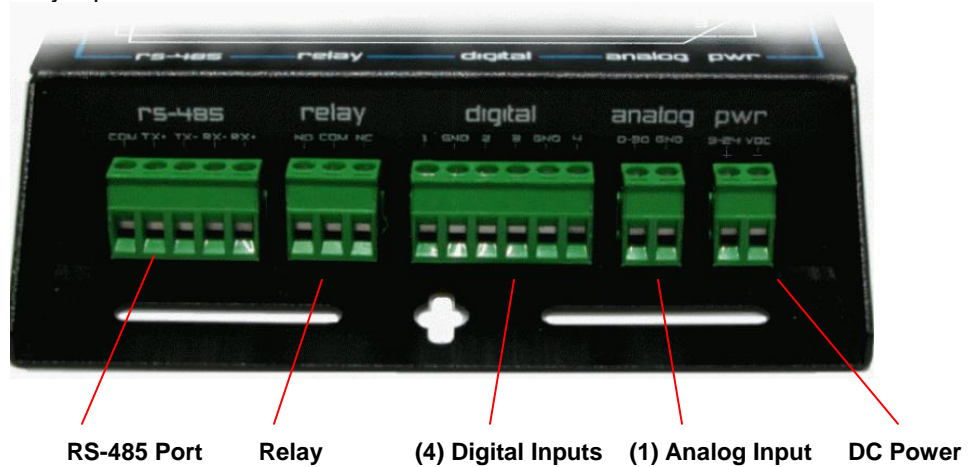


January 2009

### Hardware interfaces

The COM1000 provides the following hardware interfaces:

- One Analog Input
- Four Digital Inputs
- One Relay Input

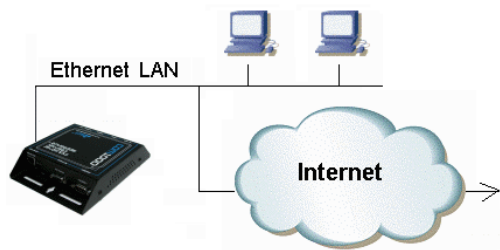


Relay Outputs	Digital Inputs	Analog Inputs	Power Input
This interface is used to connect a device that you want to turn on and off.	This interface is used to connect simple contact closure switches.	This interface is used to connect simple analog measurement gauges.	This interface is used to connect to a 9-30 VDC power source.

### LAN interface connections

The 10 BASE-TX connection is used for connections to any Ethernet LAN. This type of installation requires the use of Category 5 twisted-pair wire. The 10BASE-TX interface complies with the EIA 568 wiring standard.

#### Sample Ethernet Connections



COM1000 connected to an Ethernet LAN



COM1000 connected to a PC using a crossover cable

## COM1000 Flash Utility Instructions

The COM1000 uses a MS Windows based Flash Utility to load new firmware into the device. The following are the steps necessary to load new firmware.

### Step 1:

Connect your PC to the COM1000 Terminal Port using any standard RS232 serial cable. The Terminal Port is a DCE, so there is no need for a null adapter. Any standard serial cable will work just fine.

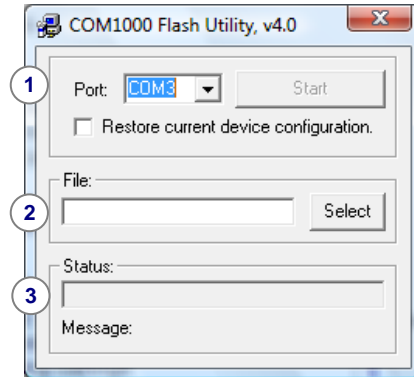


### Step 2:

#### Launch the COM1000 Flash Utility.

You will see that the Flash Utility is divided into (3) sections:

1. COM Port Selector
2. Firmware binary file selection
3. Flash Status and Message section



### Step 3:

Select the COM Port where the device is located.

### Step 4:

Select the binary image file you want to load.

The file should already be located on your PC. The file will have a name that looks like this:

**C1000.2005.29.0133.bin**

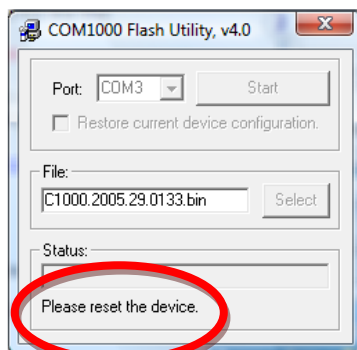
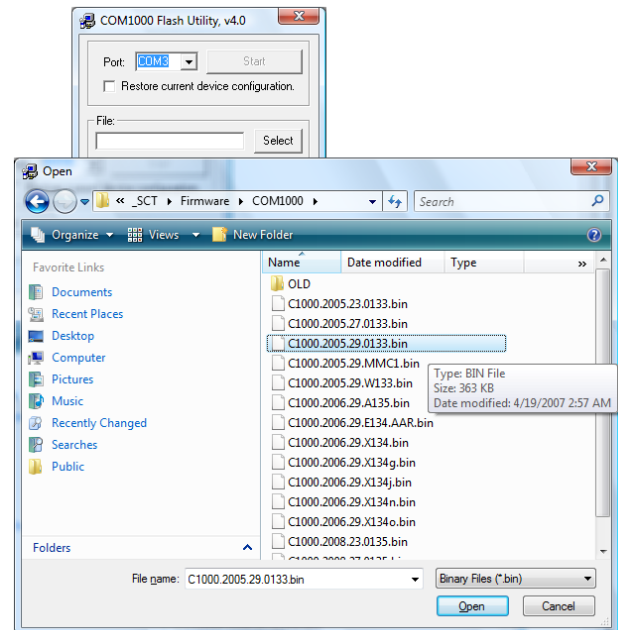
If you do not have a file like this on your PC, you can download the file at the company website at:

[www.simplecomtools.com](http://www.simplecomtools.com)

### Step 5:

#### Hit START.

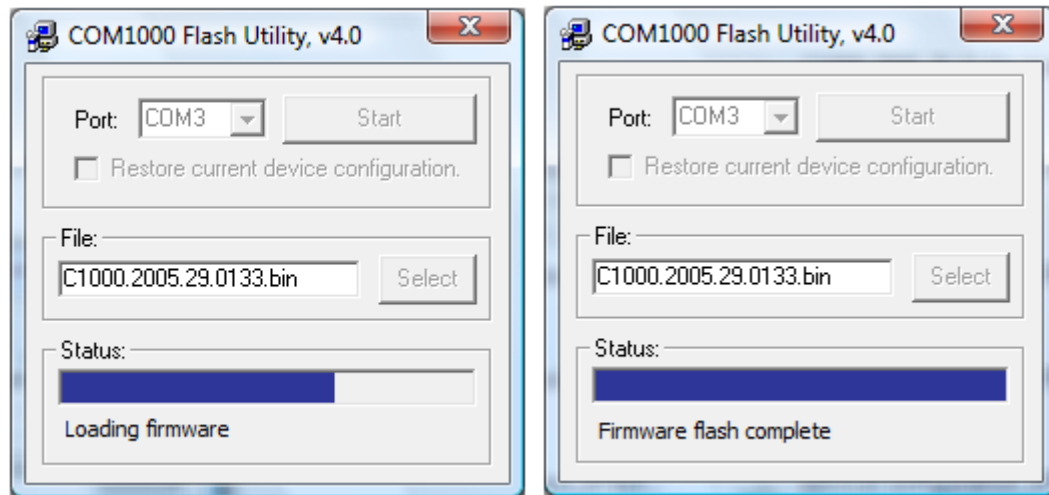
The application will try to load the firmware. Instructions will appear in the STATUS section. The first such message will be **PLEASE RESET THE DEVICE.**



This can be done simply by pressing the red reset button on the front of the device.

**Step 6:**

Once you reset the device the flash utility will begin to load the firmware.



~~~~~

**CAUTION**

~~~~~

**DO NOT DISTURB THE DEVICE WHILE IN THE FLASHING PROCESS  
OR YOU RISK DAMAGING THE CPU.**

~~~~~

**Step 7:****Reset the device to factory defaults**

Once the flash is complete, it is always beneficial to reset the device to the factory default configuration.

Here are the procedures to reset the device back to factory defaults.

- 1 – Remove power from the COM1000.
- 2 – Hold down the reset button.
- 3 – Continue to hold the reset button and reapply power.
- 4 – You will see the lights flash slowly and then quickly.
- 5 – Once you see the lights on the COM1000 begin to flash quickly for 5 seconds, you can release the reset button. Factory reset is complete.