

# COM3000

for



The COM3000™ is a unique blend of Serial and IP networking, digital and analog inputs, relay outputs, Wiegand card-reader inputs, RS232 and 485 device servers, and pre-compiled applications all combined in one rugged, cost-effective appliance.

## Numerex Ready

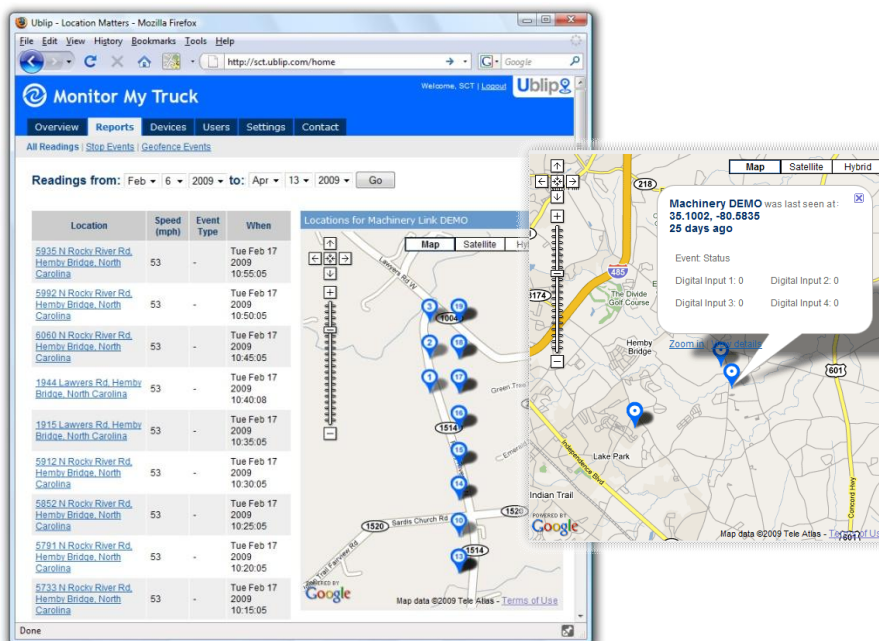
Designed to simplify remote communications and data collection, the COM3000 is fully integrated with the Numerex DNA Applications portal. Capture continuous data from your remote processes and equipment and view it on the web, whenever you need it. Logging intervals can be as frequent as you need. Field data is transmitted securely to Numerex servers, archived and ready for use with report generation and data visualization tools or for export to your external systems.

## Position and Location

With SCT and Numerex, you'll always know exactly where your assets are located. The COM3000 has all of the necessary features to deliver a rich-user experience for location-based services. Whether your service is tracking vehicles, mobile assets, or simply presenting fixed-assets status in a map view, we can help get the application up and running right out of the box.

## Maximize Resources, Maximize Uptime

You now have everything you need to deliver service for predictive maintenance and to help protect against equipment failures and unnecessary downtime. Designed to provide a rich, trending and graphical interface combined with a rules dialogue to stimulate real-time notifications for predictive maintenance activities, SCT and Numerex help you manage assets based on need rather than scheduled visits – enabling them to react to situations before they escalate and result in significant downtime and loss in revenue.



## Specifications:

### Configuration

Terminal / Telnet Interface  
AT Commands  
MS Windows® Utility  
Numerex / Ublip Portal

### Inputs

(12) Digital Inputs  
(4) Analog Inputs  
(2) Relay Control Outputs  
(2) Wiegand 26-Bit  
Access Control Inputs

### Protocols

Ethernet, IP, UDP, TCP, NTP, PPP, DNS, HTTP, MySQL

### 3G Cellular Support

SMS, GSM, GPRS, EDGE, CDMA, 1x, EvDO

### Network Interfaces

RJ45 10BaseT Ethernet  
PPP over RS232 DTE

### Serial Interfaces

(1) RS232 DB9F DCE  
(1) RS232 DB9M DTE  
(1) RS485 Terminal Block

### Digital Inputs

(12) Optically Isolated  
- 5VDC sourcing  
- Internal 1KOhm resistor

### Analog Inputs

(4) 4-20mA or 0-30VDC  
Jumper Selected  
Resolution: 12-bit

### Accuracy:

± 0.03 % of FS @ 25°C  
± 0.15 % of FS @ -40 - +85°C

### Relay Outputs

(2) 10 Amp @ 120 VAC  
8 Amp @ 30 VDC

### Real-Time Clock

Yes; Synched via NTP

### Physical Dimensions

(H x W x D)  
1.4" x 7.25" x 6.5"

### Environmental

Operating Temp  
-40° to +70° C

### Humidity

5-95% Non-condensing

### LEDs

Power, Serial TX/RX, PPP, RJ45 Link/Activity/Collision

### Power Requirements

9-30VDC

### Typical Use:

300mA @ 12VDC

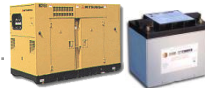
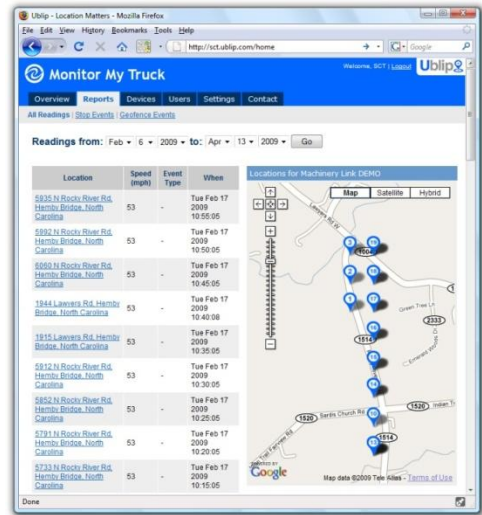
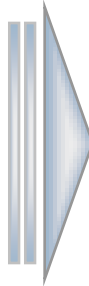


Machine-To-Machine – Simplified

### Faster Time to Market

Numerex provides a whole series of options from packaged applications to fully customized applications. They offer M2M market-ready solutions that are fully integrated with their M2M wireless data network and deployed by our partners and customers across many industries. Numerex also supports applications developed by both customers and application developers, and offers application hosting where required.

Simple Com Tools provides simple to use, cost-effective hardware that allows you to use any network carrier or connectivity of your choosing, including GPRS, CDMA, SMS, Cable, DSL, or dialup. Our hardware is already pre-integrated with the Numerex portal. There are no development costs or customization to delay your rollout. Together, SCT and Numerex get you to market quickly and inexpensively, improving your bottom line.



**Pulse and Digital Inputs**

**Analog Measurement**

**Power Monitoring**



**Legacy Device Connectivity**

**Access Control**

**Output Control**

The COM3000 supports 12 Digital Inputs, 4 Analog Inputs, 2 Relay Outputs and 2 RFID/card reader inputs, as well as prepared data collection, reporting and control via the Numerex portal.

### COM3000 Dimensions

